

Buckingham Road, Borehamwood

£275,000 (Leasehold)

VILLAGE
E S T A T E S



This larger than average 1 bedroom ground floor apartment is located on the South Side of Borehamwood in the quiet turning of Buckingham Road. Approximately 1.5 miles from Elstree & Borehamwood mainline station and 1.2 miles from Borehamwoods busy High Street with an array of amenities. There are some local convenience stores and shops including the post office just 5 minutes away on foot.

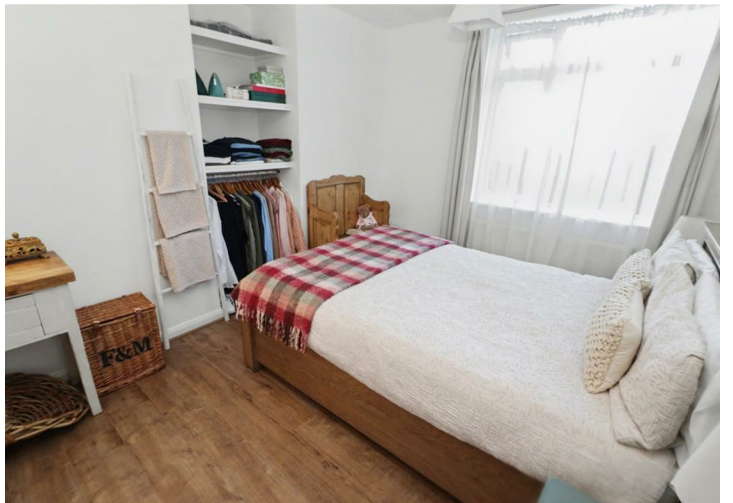
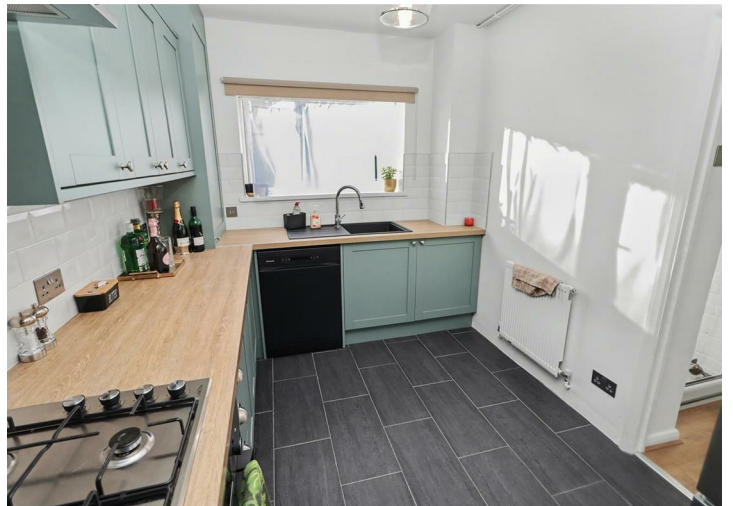
The property has been beautifully renovated by its current owner boasting a brand new kitchen and updated bathroom. Redecorated throughout the flat also comprises of an entrance hall, double bedroom, lounge/dining room and covered store/utility area. Externally there is a large private garden with outbuilding and direct access from the apartment. To the front is ample residents and visitors parking.

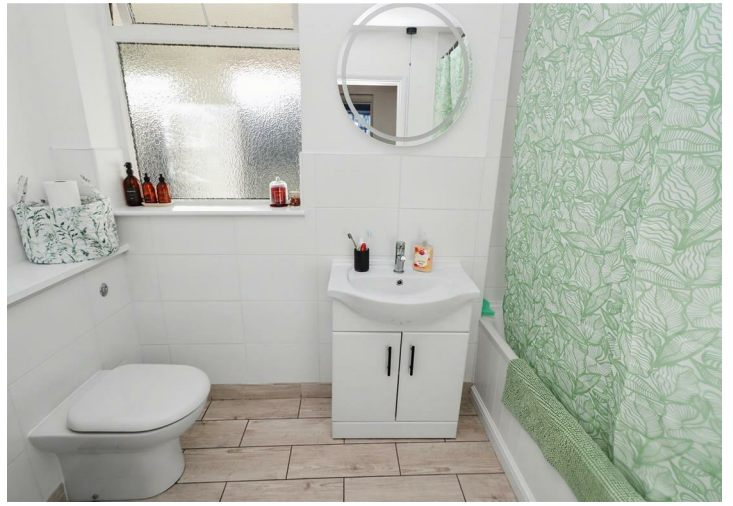
020 3764 2222
www.village-estates.co.uk



Village Estates
The Corner Shop High Street, Elstree
Herts WD6 3BY

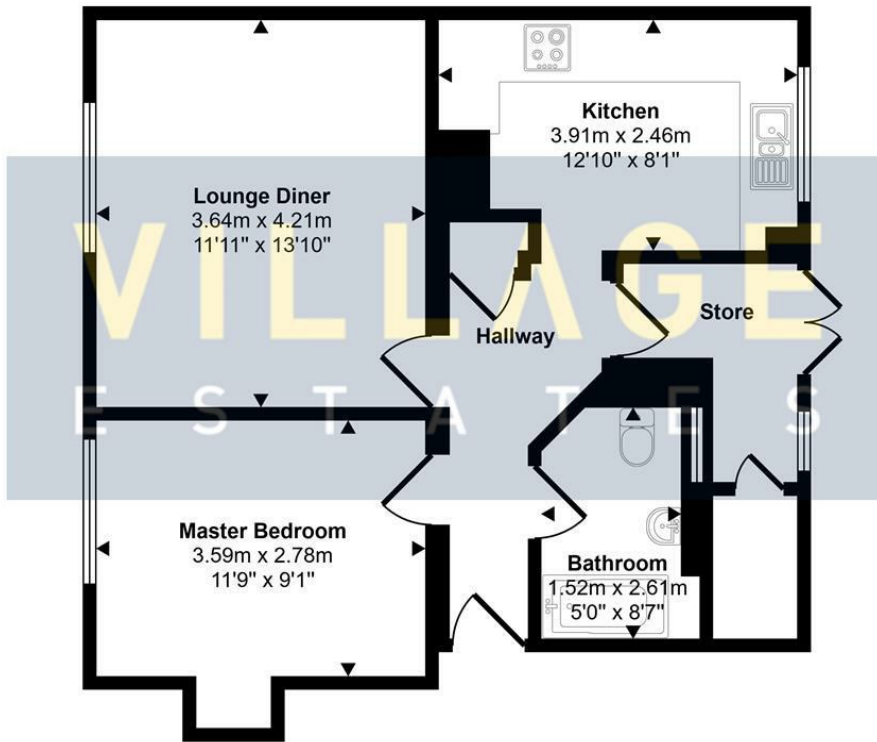
Important Note: These particulars do not form part of any contract. All measurements are approximate and should not be relied upon. All prices quoted are strictly subject to contract.







Approx Gross Internal Area
53 sq m / 574 sq ft



Floorplan

This floorplan is only for illustrative purposes and is not to scale. Measurements of rooms, doors, windows, and any items are approximate and no responsibility is taken for any error, omission or mis-statement. Icons of items such as bathroom suites are representations only and may not look like the real items. Made with Made Snappy 360.



Energy Efficiency Rating		Current	Potential
Very energy efficient - lower running costs			
(92 plus)	A		
(81-91)	B		
(69-80)	C		
(55-68)	D		
(39-54)	E		
(21-38)	F		
(1-20)	G		
Not energy efficient - higher running costs			
England & Wales		EU Directive 2002/91/EC	